

SHERWIN-WILLIAMS PLAZA

17438 E COLONIAL DRIVE
ORLANDO, FL 32820



8,000 SF



RETAIL FOR LEASE



CALL FOR RATES

PROPERTY INFORMATION

Lease Rate: Call for Rates
Total GLA: 13,000 SF
Size Available: 8,000 SF
US-50 AADT: 28,204 CPD

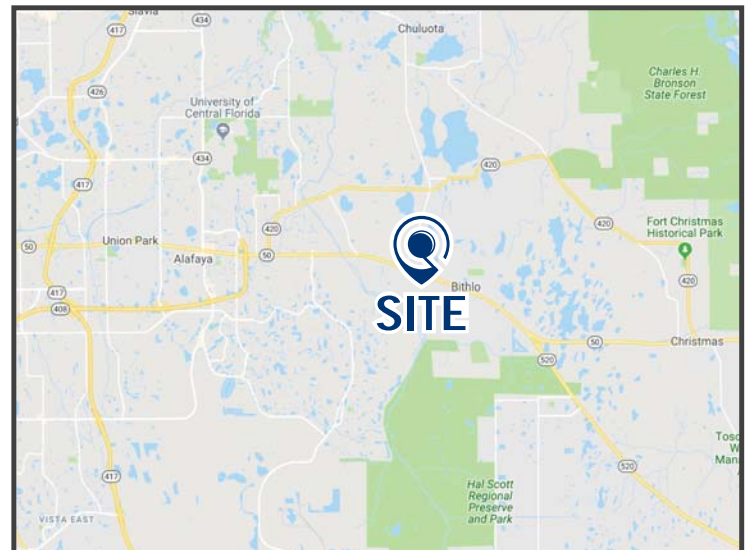
Co-anchor space available adjoining national retailer Sherwin-Williams.

Great visibility on major thoroughfare SR-50 (Colonial Drive).

Monument signage available.

Less than five-miles to SR-408.

High average household income of \$84,024 within three-miles.



DEMOGRAPHICS

	<u>1-MILE</u>	<u>3-MILES</u>	<u>5-MILES</u>
Total Population	3,489	33,957	98,120
Five-Year Increase	2.4%	2.3%	2.2%
Avg Household Income	\$61,263	\$84,024	\$83,086
Total Households	1,187	11,426	32,305
Daytime Employees	1,128	3,495	14,716

(Applied Geographic Solutions 2018)

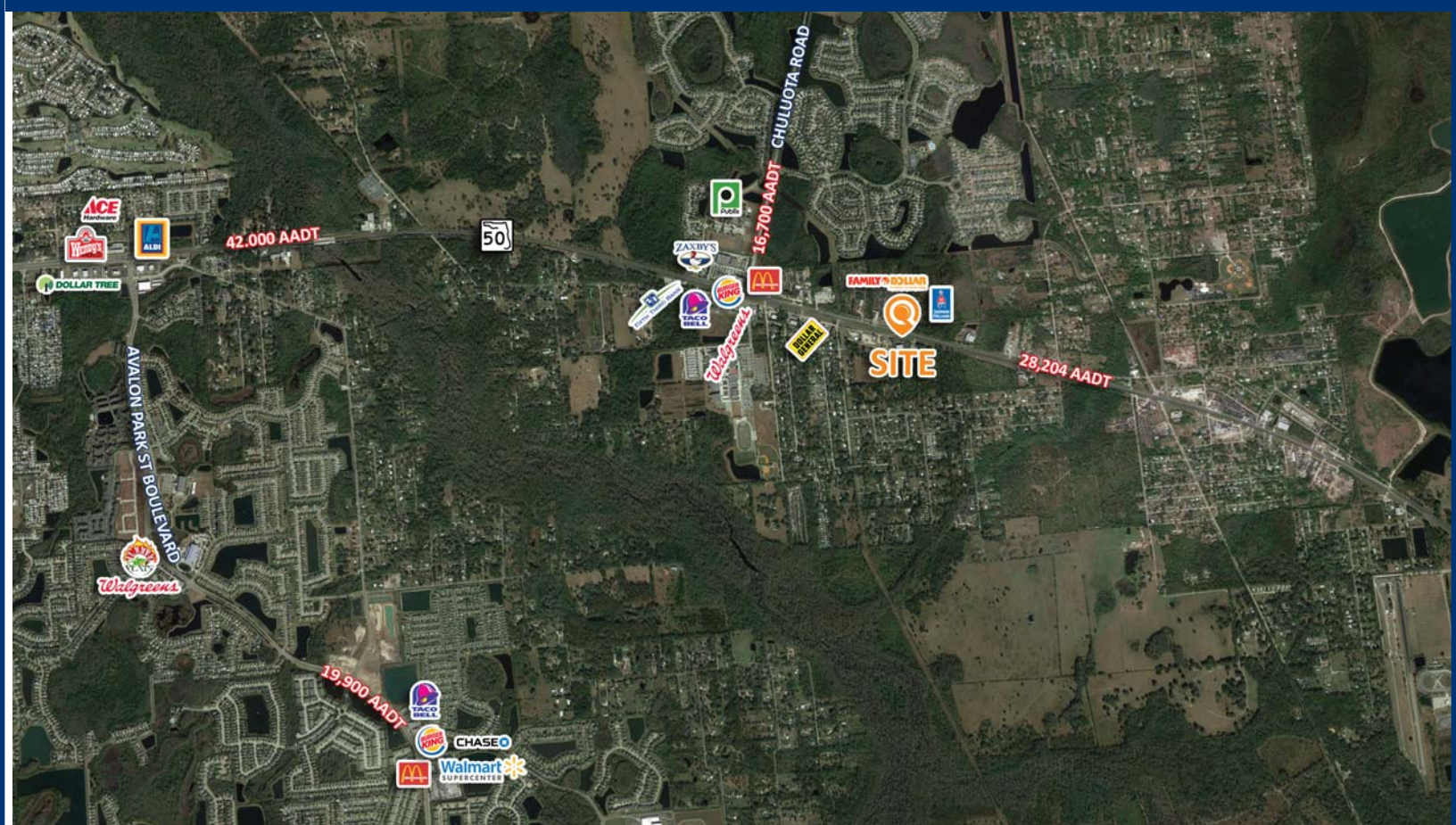
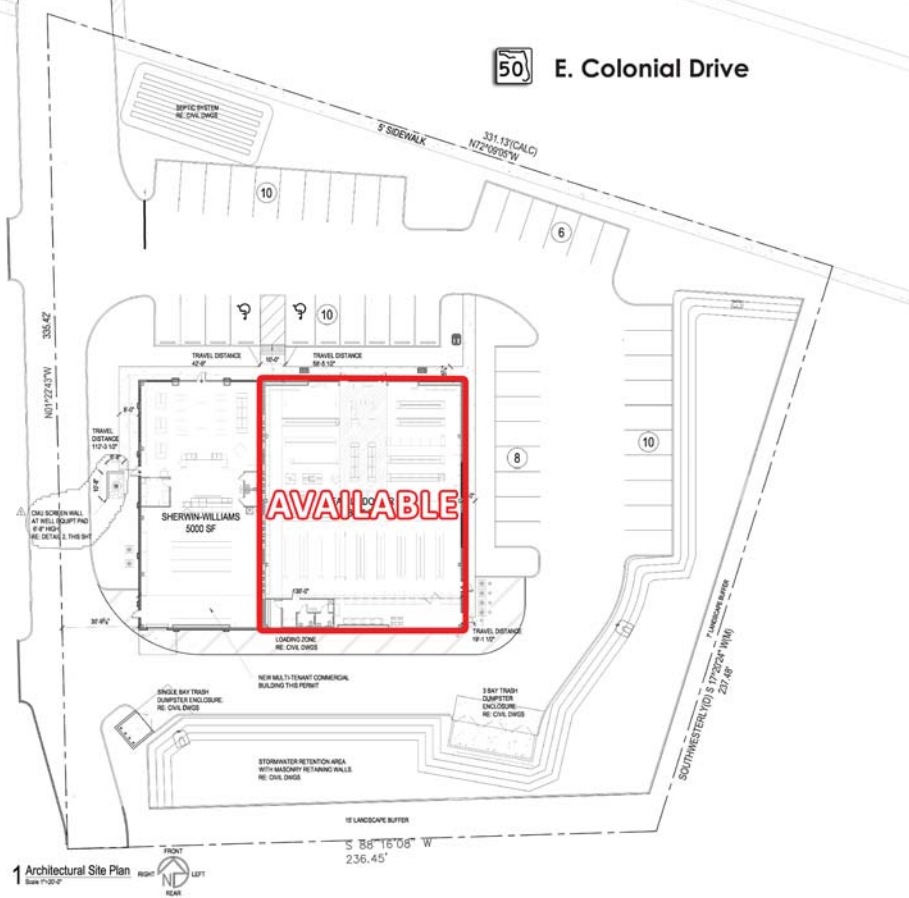
LQWEST.COM/SHERWIN-WILLIAMS

JULIA SOSA, PRINCIPAL
D: 407.775.4358 @ M: 407.257.8246
jsosa@lqwest.com @ [My LISTINGS](#)

EVA GRACE ROYAL, SENIOR ASSOCIATE
D: 407.705.2217 @ M: 407.421.3532
eroyal@lqwest.com @ [My LISTINGS](#)

LANDQWEST COMMERCIAL REAL ESTATE SERVICES @ 423 S. KELLER ROAD, SUITE 400, ORLANDO, FL 32810





423 S. Keller Road, Suite 400, Orlando, FL 32810

MAIN: 407.660.7500 © FAX: 407.660.7600 © LQWEST.COM

Information obtained from owner(s) or other sources deemed reliable. We have no reason to doubt its accuracy, but cannot guarantee it. All properties subject to change or withdrawal without notice.