



**AL, Mobile**  
3683 Airport Blvd  
11,100 SF Free-Standing Building

	1 mile	3 mile	5 mile
Population	8,557	70,443	179,791
Daytime Population	22,670	99,972	207,993
Avg HH Income	\$38,942	\$43,619	\$40,941

PROPERTY INFORMATION

- + Superb visibility from Airport Blvd with +51,140 vpd
- + Located on main retail corridor
- + Area Retailers: Academy, DSW, Guitar Center, Office Depot, The Home Depot, Rooms To Go, Steinmart, TJ Maxx, Whole Foods Market

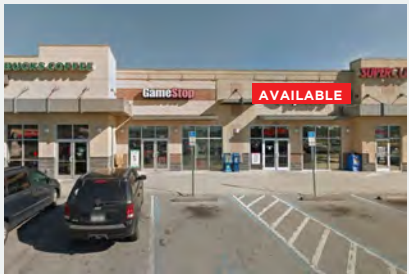


**FL, Bithlo (Orlando MSA)**  
17438 E Colonial Dr  
8,000 SF Available

	1 mile	3 mile	5 mile
Population	3,489	33,957	98,120
Daytime Employees	1,128	3,495	14,716
Avg HH Income	\$61,263	\$84,024	\$83,086

PROPERTY INFORMATION

- + Co-anchor space adjoining Sherwin Williams
- + Great visibility from major highway SR-50
- + Less than 5 miles from SR-408
- + Area Retailers: Aldi, Dollar General, McDonald's, Publix, Taco Bell, Walmart, Zaxby's



**FL, Callaway (Panama City MSA)**  
736 N Tyndall Pkwy  
1,632 SF Inline Available

	3 mile	5 mile	10 mile
Population	37,761	63,281	130,557
Daytime Employees	9,455	37,282	63,478
Avg HH Income	\$44,333	\$50,649	\$53,510

PROPERTY INFORMATION

- + 2nd gen retail/restaurant space available
- + Excellent visibility on Tyndall Pkwy
- + Close proximity to Tyndall Air Force Base
- + Only restaurant space move-in ready due to Hurricane Michael
- + Area Retailers: Applebee's, Bealls, Chick-fil-A, Starbucks, Walmart, Winn Dixie



**FL, Valrico (Tampa MSA)**  
1914 E Highway 60  
1,400 - 3,500 SF w/ Drive-Thru  
& 1,400 SF Inline Available

	1 mile	3 mile	5 mile
Population	12,365	78,202	186,704
Daytime Employees	3,727	21,610	49,505
Avg HH Income	\$73,113	\$84,165	\$84,710

PROPERTY INFORMATION

- + LA Fitness anchored center
- + Site facing Brandon Blvd w/ +59,000 vpd
- + 2nd gen restaurant space available
- + Area Retailers: Chick-fil-A, Chili's, Cracker Barrel, Dollar Tree, Lowe's, Starbucks, The Home Depot, Publix Super Market, Walmart



**KY, Owensboro**  
5050 Frederica St  
1,400 - 8,000 SF Available w/ Drive-Thru End Cap

	1 mile	3 mile	5 mile
Population	3,422	35,195	69,084
Daytime Employees	6,051	18,742	48,351
Avg HH Income	\$61,887	\$66,375	\$64,142

PROPERTY INFORMATION

- + Single or multi-tenant opportunity w/ drive thru
- + Located along major corridor in front of the mall
- + Area Retailers: Chick-fil-A, JCPenney, Panera Bread, Petsmart, The Home Depot, Sam's Club, Target, TJ Maxx, Walmart



**LA, New Orleans**  
**Algiers Plaza**  
4150 General De Gaulle Dr  
1,400 - 22,000 SF Available

	1 mile	3 mile	5 mile
Population	19,059	104,551	260,095
Total Housing Units	8,290	43,485	120,375
Avg HH Income	\$62,059	\$59,417	\$62,194

PROPERTY INFORMATION

- + Free standing QSR pad w/ drive thru available
- + Over 47,000 vpd along General De Gaulle Dr
- + 5 miles from downtown New Orleans
- + Area Retailers: Ross, TJ Maxx, Five Below, Winn Dixie, Walgreens, Buffalo Wild Wings, Firehouse Subs, YouFit Gym, Petco, Burkes Outlet



### NC, Asheville

209 Tunnel Rd  
4,266 SF Free-Standing Building or  
1,800 SF w/ Drive Thru Available

	3 mile	5 mile	10 mile
Population	47,072	90,531	207,088
Daytime Population	60,001	80,101	130,343
Avg HH Income	\$59,231	\$64,544	\$67,354

#### PROPERTY INFORMATION

- + Excellent visibility & access from Tunnel Rd & US 70
- + Located on main retail corridor
- + Area Retailers: Alamo Drafthouse, Barnes & Noble, Belk, David's Bridal, Dillard's, Ihop, JCPenney, Lowe's, Old Navy, Rooms To Go, TJ Maxx, Walmart



### NM, Hobbs

220 W Bender Blvd  
2,553 SF QSR w/ Drive Thru & Patio

	1 mile	3 mile	5 mile
Population	11,225	38,570	48,869
Daytime Employees	4,633	17,847	21,138
Avg HH Income	\$97,046	\$74,967	\$78,047

#### PROPERTY INFORMATION

- + Centrally located on a major retail artery
- + Excellent visibility w/ frontage on Bender Blvd
- + Renovation money available
- + 29 parks with land available to add parking
- + Area Retailers: Albertsons, CVS, Hobby Lobby, Harbor Freight Tools, Kmart, Staples



### TX, Alamo (McAllen MSA)

1449 W Duranta St  
2,167 SF Available

	1 mile	3 mile	5 mile
Population	10,195	76,000	164,381
Daytime Population	6,937	39,682	95,759
Avg HH Income	\$52,477	\$52,326	\$50,031

#### PROPERTY INFORMATION

- + Adjacent to high volume Walmart
- + Great visibility from Hwy 83 w/ +108,000 vpd
- + Excellent national tenant mix
- + Area Retailers: AT&T, Carl's Jr, Bealls, Cato, Denny's, Dollar Tree, Popeyes, Rodeo Dental, Shoe Dept, Walmart, Wingstop



### TX, Dumas

2025 S Dumas Ave  
2,800 SF Endcap Available

	1 mile	3 mile	5 mile
Population	1,659	15,507	16,235
Daytime Employees	1,492	5,480	6,143
Avg HH Income	\$60,651	\$56,720	\$61,877

#### PROPERTY INFORMATION

- + Walmart shadowed center w/ excellent visibility
- + Easy access to travelers between CO & TX
- + Co-tenancy: Army Corps of Engineers, Cash Store, Gamestop & Verizon
- + Area Retailers: Cato, Hibbett Sports, Sally Beauty, Stage, Taco Bell, United Supermarkets, Walmart



### TX, El Paso

1385 George Dieter Dr  
3,096 SF Free Standing QSR w/ Drive-Thru

	1 mile	3 mile	5 mile
Population	6,576	114,971	286,957
Daytime Employees	12,514	53,032	85,600
Avg HH Income	\$84,736	\$63,342	\$61,035

#### PROPERTY INFORMATION

- + Free standing restaurant w/ kitchen equipment & drive thru
- + Located on high traffic corridor
- + Adjacent to future 52,000 SF medical office park
- + Area Retailers: Cheddar's, Chipotle, Cinemark, Cost Plus World Market, DSW, Kohl's, Lowe's, Michaels, Outback Steakhouse



### TX, Hereford

701 N 25 Mile Ave  
1,000 - 5,200 SF Available

	1 mile	3 mile	5 mile
Population	5,801	18,232	18,354
Total Housing Units	1,999	6,125	6,311
Avg HH Income	\$47,134	\$48,530	\$48,604

#### PROPERTY INFORMATION

- + Walmart shadow anchored center
- + Property location has excellent visibility & accessibility in a well established retail corridor
- + Area Retailers: AT&T, Bealls, Cato, Hibbett Sports, Tractor Supply Co, United Supermarkets, Walmart



**TX, Hudson Oaks (DFW MSA)**  
 NWC I-20 & South Oakridge Dr  
 2,000 SF Inline Available

	1 mile	3 mile	5 mile
Population	1,384	17,897	37,704
Daytime Population	1,967	8,662	26,884
Avg HH Income	\$112,525	\$115,839	\$109,337

PROPERTY INFORMATION

- + Retail center located adjacent to Walmart
- + Easy access to I-20 & Hwy 180
- + Area Retailers: Anytime Fitness, Chick-fil-A, Dairy Queen, H-E-B, Hibbett Sports, McDonald's, Taco Bell, Waffle House, Walgreens, Walmart



**TX, Lubbock**  
 2312 19th St  
 1,358 - 3,358 SF Available

	1 mile	3 mile	5 mile
Population	22,106	88,657	190,551
Daytime Population	10,673	61,548	118,440
Avg HH Income	\$43,103	\$50,326	\$57,126

PROPERTY INFORMATION

- + Over 5,000 residents within walking distance
- + 2 blocks east of Texas Tech Univ. (38,000 students)
- + Excellent visibility from 19th Street
- + Area Retailers: CVS, Dollar General, Ihop, McAlister's Deli, McDonald's, Torchy's Tacos, Raising Cane's



**TX, San Angelo**  
 4238 Sunset Dr  
 29,817 SF Available

	1 mile	3 mile	5 mile
Population	7,856	48,117	77,556
Daytime Employees	8,983	42,594	73,724
Avg HH Income	\$68,621	\$70,732	\$70,579

PROPERTY INFORMATION

- + Freestanding anchor space with approved expansion of up to 45,000 SF
- + Located near major national retailers in the heart of San Angelo
- + Area Retailers: Academy, Best Buy, Cinemark, Gold's Gym, Petsmart, Ross, Target, Walmart,



**TX, Southlake (DFW MSA)**  
 2645 E Southlake Blvd  
 1,060 - 3,300 SF Available

	1 mile	3 mile	5 mile
Population	4,071	58,381	120,348
Daytime Population	14,181	60,300	105,791
Avg HH Income	\$221,432	\$178,254	\$188,801

PROPERTY INFORMATION

- + Former Mattress Firm in-line space available
- + High visibility on Southlake Blvd w/ 35,000 vpd
- + Located in established retail area serving Southlake, Grapevine, Colleyville & Trophy Club
- + Area Retailers: 24 Hour Fitness, Buy Buy Baby, Chick-fil-A, Costco, Homegoods, Lowe's, Old Navy, TJ Maxx, Ulta, World Market



**TX, Sweetwater**  
 309 NE Georgia Ave  
 1,400 SF Available

	1 mile	3 mile	5 mile
Population	13,193	13,676	27,031
Daytime Population	6,023	6,066	10,100
Avg HH Income	\$56,836	\$57,912	\$63,764

PROPERTY INFORMATION

- + Walmart shadowed center on I-20
- + Minutes from the Rolling Plain Memorial Hospital
- + No Walmart restrictions
- + Area Retailers: AT&T, Buddy's Home Furnishings, Cato, Holiday Inn Express, Tractor Supply Co, Walmart, Whataburger



**Jeannie De Fazio**  
 VP Real Estate  
 jdefazio@n3realestate.com  
 817.675.7765

**Hunter Boeken**  
 Leasing Director  
 hboeken@n3realestate.com  
 817.675.7761

**Doug Hermann**  
 Real Estate Director  
 dhermann@n3realestate.com  
 817.908.2123



# SPACE AVAILABLE NOW



build-to-suit



fee development



spaces for lease across the country



brand advisory



site selection



## WE DELIVER

N3 is your complete new store development solution. Whether you want to own or lease your real estate, N3 provides the sites, real estate capital, construction and expertise. We have our own capital, \$250M of cash flowing properties nationwide, 20 professionals and internal decision makers who will advise your brand.



**Jeannie De Fazio**  
*VP Real Estate*  
jdefazio@n3realestate.com  
817.675.7765

**Hunter Boeken**  
*Leasing Director*  
hboeken@n3realestate.com  
817.675.7761

**Doug Hermann**  
*Real Estate Director*  
dhermann@n3realestate.com  
817.908.2123